

DRYING, CURING AND STORAGE SYSTEMS

BREAKTHROUGH TECHNOLOGY FOR POST HARVEST PROCESSING

When drying, curing and storing your harvest, excess water loss, unstable temperature and uncontrolled moisture are the enemy. Dry, cure and store in one location to reduce handling and minimize damage to trichomes.

High sanitary standards and consistently excellent consumer experiences are the future of cannabis. As demand continues to rise, savvy consumers will seek out premium products that assure healthy processing and great quality. Products that deliver. Products that raise the bar.



CONSISTENT PRODUCT QUALITY

Cannatrol Systems allow cultivators to create repeatable post harvest condition run after run, in any climate, anytime of year. That means your customers can trust they will get the same quality coast to coast, season to season.

HIGHER YIELDS

Cannabis is sold by weight. Over-dried flowers weigh less. The math is simple, increased yield with no additional input cost means profits go right to the bottom line. Cannatrol systems offer higher yields and a quick ROI.

A GREAT SMOKE

No one wants to smoke harsh flower. A poorly dried and cured product can lead to a harsh, unpleasant smoking experience. Customers will come back to you and stay loyal to your brand when you deliver a great smoke consistently with Cannatrol.

THE PROOF IS IN THE LAB

Rigorous ongoing laboratory testing validates that Cannatrol Systems deliver higher terpene retention, maximizes potency and higher yield. We are committed to bringing this technology to cultivators of all sizes and giving growers a level of control, consistency and repeatability never before achievable.

Cannatrol was born out of technology developed for the food industry. With hundreds of systems all over North America, we understand how to effectively manage water loss and the importance of accurate and consistent target water activity levels.

Our small scale system, the "Cool Cure" is used by thousands of home-growers with the same patented Vaportrol Technology with the same great results. We give commercial growers the tools to produce a premium quality shelf stable product that really delivers.

We will work with your engineers, architect and builder to plan the perfect solution for your cultivation facility whether its new construction or retrofit. **Call us to talk about your project and learn how Cannatrol Dry, Cure and Storage systems will fit into your plans.**



Call us today 802-738-0709
Visit us at [Cannatrols.com](https://www.cannatrols.com)
Email us inquiry@cannatrols.com

DRYING, CURING & STORAGE SYSTEMS

VAPORTROL® TECHNOLOGY

Patented Vaportrol® Technology levels out the drying, curing, and storage environment using the power of managed vapor pressure. This innovative technology gives you complete control of the processing space allowing you to create repeatable standard operating procedures.

ENVIRONMENTAL EQUILIBRIUM

Cannabis flower must be dried to the correct water activity level of .6-.65 to produce a safe, shelf stable product. Your harvest is put in the perfect environment and the flower will be gently brought to equilibrium. All size buds come to the same perfect water activity level and never over dry.

REDUCED LABOR AND IMPROVED QUALITY

With the Cannatrol System there is no longer a need for moving product from the dry space to cure rooms thus, reduce labor, and less damage to trichomes. No over-drying, no rushing to 'take down' a room. Flowers are held there until you are ready to move them to long term storage, packaging or downstream processing.

WHAT OUR CUSTOMERS ARE SAYING

"There is a whole lot of snake oil in this industry, but your technology delivers."

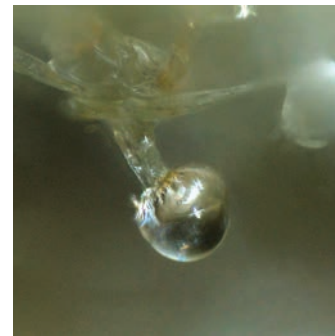
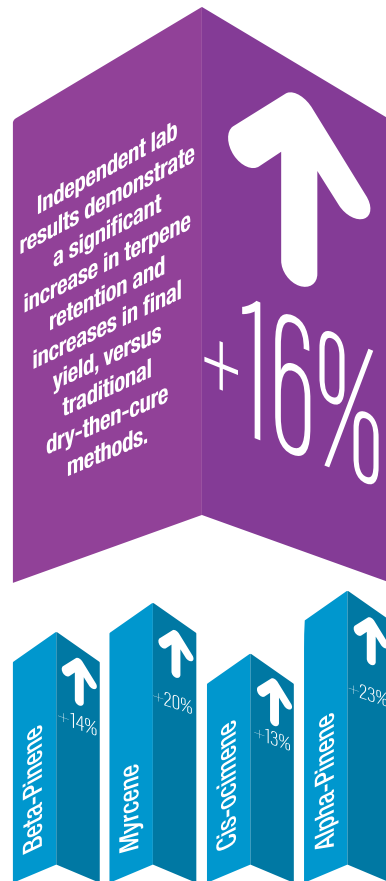
"I have been working with cannabis a long time and this is by far the best flower I have ever turned out."

"Thanks for your great service and follow-up. We are excited to include you in our next build out."

"I didn't know cannabis can taste this good when dried and cured properly. Outstanding product!!"

CANNATROL PRESERVES TRICHOME INTEGRITY, DELIVERING HIGHER TERPENES THAN TRADITIONAL METHODS.

By consistently controlling the vapor pressure in the processing space, the delicate trichome cuticle is able to quickly cure and stabilize, sealing in terpenes. When conditions are unstable, trichomes can rupture, releasing terpenes and reducing stability.



The image above shows an unruptured trichome using a Cannatrol System.



The image above shows a ruptured trichome from flower dried in a traditional system.

CANNATROL REACHES AND HOLDS A STABLE 0.6 WATER ACTIVITY.

Over-drying flower from a 0.6 water activity to 0.4 can result in as much as 10% in lost yield and bottom line profit. Lets talk about your last COA and your target water activity.

Water Activity Level (a _w)	0.6	0.55	0.5	0.45	0.4
Average Yield Impact	0%	-3.0%	-5.6%	-7.7%	-10.0%



Call us today 802-738-0709
Visit us at Cannatrols.com
Email us inquiry@cannatrols.com

CUSTOM SOLUTIONS

Cannatrol Custom Solutions contain the same patented Vaportrol® Technology as our small Cool Cure units and DC Room Kits, but are custom built into your existing or planned space using vapor tight wall panels.

- **DIAL IN SPECIFIC SET POINTS**
- **PROGRAM UP TO 5 DIFFERENT CONDITIONS**
- **HANG DRY OR RACK DRY**
- **ACCESS SYSTEM REMOTELY**

Drying cannabis to the correct target water activity level, then curing and storing while maintaining that target level, yields buds that smoke beautifully, weigh more and reduces the opportunity for mold growth.

HOW DO WE DESIGN YOUR SYSTEM?

We will work closely with you and your team to design the most efficient and economical system for your facility. We'll discuss:

- What is your harvest cycle?
- How many wet pounds of flower can you load in a 24 hour period?
- What is your construction method? Is it a Vapor tight structure?
- Do you have existing chillers and hot water that can support the system?
- Will you hang dry or rack dry?

WHAT IS A VAPOR TIGHT SPACE AND WHY DO I NEED IT?

A vapor tight space is normally built out of monolithic panels and is sealed to the outer ceilings (unless sealed with insulating foam). The space should have an insulation value of R-28 or better when possible.

Working in a vapor tight space is key to the effectiveness of our patented technology. It is also a cleanable space that is easy to construct.

Sheetrock on wood frame construction or other 'porous' construction materials are not recommended for use with Vaportrol Technology.



Call us today 802-738-0709
Visit us at [Cannatrols.com](https://www.cannatrols.com)
Email us inquiry@cannatrols.com

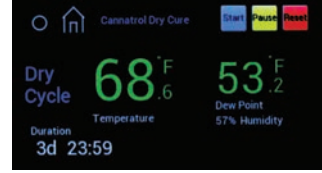
COOL CURE™ FOR HOMEGROWS

At Cannatrol™, we use patented Vaportrol® Technology to create the perfect environment for drying, curing, and storing your buds. Our system ensures consistent and repeatable high-quality results, and independent lab testing has shown significant improvements in terpene retention, potency, and yield compared to traditional methods.

If you want to take control of your post-harvest process and achieve the best possible results, a Cannatrol System is the way to go.



Cool Cure Dimensions:
H28.25"×W17.75"×D20.5"



The Cannatrol Cool Cure system holds up to 2.2 pounds of wet buds per cycle and can store up to 4-5 pounds of finished flower in ideal conditions.

BEST DRY AND CURE SYSTEM



METRO™ RACKING AND DRI-FLOWER™ HANGING SYSTEMS

We are partners with Metro International and are pleased to offer rolling racks, trays and stationary racks to Cannatrol customers. All customers ordering a rack dry system will receive a scale cart and 20 Wavdri Trays.

ANTI-MICROBIAL TRAYS • CHROME OR STAINLESS • ROLLING RACKS



Cover  Flip



DRI-FLOWER™



Call us today 802-738-0709
Visit us at Cannatrols.com
Email us inquiry@cannatrols.com



Cannatrol™
DRY • CURE • STORE